

# PT62HP

## FLOAT & THERMOSTATIC STEAM TRAPS - DN15, 20, 25



### DESCRIPTION:

PT62HP float and thermostatic (internal air vent) steam traps are designed for draining condensate from all types of low and medium pressure steam heating and process equipment.

Typical applications include unit heaters, heat exchangers, driers and jacketed vessels.

### AVAILABLE TYPES:

PT62 HP - with thermostatic air vent

PT62 HP S - SLR (with steam lock release)

PT 62 HP C - with thermostatic air vent and SLR

### FEATURES:

Modulating discharge.

Discharges condensate at steam temperature.

Excellent air venting (by thermostatic air vent).

**USE:** Saturated and superheated steam

### SIZES:

DN15, 20, 25

**CONNECTIONS:** Screwed (NPT/BSPT/BSP)  
Flanged/Socket Weld

\*End connection flanges of ASTM A105 forged carbon steel are welded on

**Non IBR/IBR approved**

### LIMITING CONDITIONS:

PMA: Max. allowable pressure	16<P≤32 kg/cm <sup>2</sup> (g)
TMA: Max. allowable temperature	400 °C
PMO: Max. operating pressure	32 kg/cm <sup>2</sup> (g)
TMO: Max. operating temperature	Sat.
Body shell design rating	42@RT
Cold hydro test pressure	48 kg/cm <sup>2</sup> (g)

### INSTALLATION:

Horizontal installation with flow from left to right.

The trap should be installed horizontally below the drain point of the equipment in a position such that the float arm is in a horizontal plane and the float rises and falls vertically, with the flow direction as indicated on the cover.

The word 'TOP' on the nameplate indicates the top side of the trap.

Max. differential pressure range:

PT62 HP-21 : 21 kg/cm<sup>2</sup>

PT62 HP-25 : 25 kg/cm<sup>2</sup>

PT62 HP-32 : 32 kg/cm<sup>2</sup>

### TRAP DISCHARGE CAPACITY IN kg/hr

MODEL	SIZE	DIFFERENTIAL PRESSURE (kg/cm <sup>2</sup> )													
		0.5	1	2	3	4.5	7	9	10	12.5	14	17.5	21	25	32
PT62 HP-21	DN15~25	260	365	460	520	590	620	645	685	700	710	730	740	---	---
PT62 HP-25	DN15~25	200	280	350	400	455	475	495	525	535	545	560	570	580	---
PT62 HP-32	DN15~25	145	205	260	295	335	350	365	385	395	400	410	420	425	440

Recommended safety factor: steady condition 1.5 - 2; fluctuating condition 2-3

## MATERIAL:

NO.	PART	MATERIAL	QTY. (Nos.)
1.	BODY	ASTM A216 Gr. WCB	01
2.	COVER	ASTM A216 Gr. WCB	01
3.	GASKET	GRAPHITE WITH SS REINFORCEMENT	01
4.	VALVE SEAT	AISI 410/420	01
5.	BALL FLOAT & LEVER ASSY.	AISI 304	01
6.	AIR VENT	BIMETAL/SS	01
7.	BOLT	ASTM A193 Gr. B7	04
8.	DRAIN PLUG	CARBON STEEL	01
9.	BRACKET ASSY.	AISI 304	01
10.	GASKET	COPPER	01
11.	SLR UNIT*	AISI 304	01

## DIMENSIONS: Nominal in mm

SIZE	A	B	C	D	E	WEIGHTS	
						#150, PN16, PN40	#300
DN15	120	187	170	111	220	5.4	5.9
DN20	120	187	170	111	220	5.8	6.5
DN25	120	187	170	111	220	11.5	12.5

SIZE	F		
	WNRF #150	WNRF #300	INT. FLANGE (#150, 300, PN16 & PN40)
DN15	195	205	150
DN20	200	210	150
DN25	210	220	160

## AVAILABLE SPARES:

Valve Seat, Ball Float & Lever Assly. Air Vent Assly. Gaskets

## HOW TO ORDER:

PT62 HP - 21 DN15 BSP NIBR

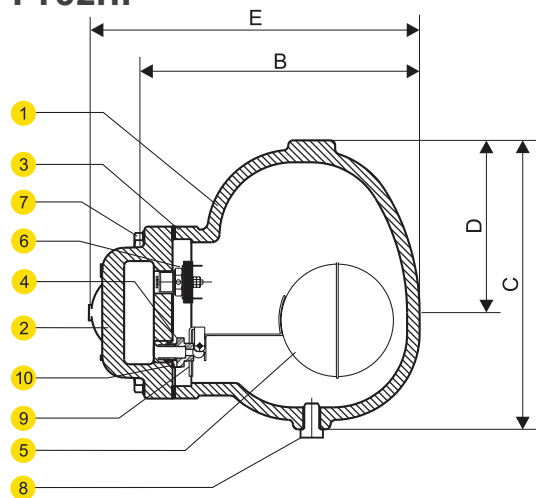
## ORDERING INFORMATION:

- 1) Inlet Pressure in bar(g)
- 2) Back Pressure in bar(g)
- 3) Operating Temperature in °C
- 4) Condensate Load in kg/hr
- 5) Size & Model
- 6) End Connections
- 7) IBR/NIBR

Local regulations may restrict the use of this product below the conditions quoted. Limiting conditions refer to standard connections only. In the interest of development and improvement of the product, we reserve the right to change the specifications without prior notice.

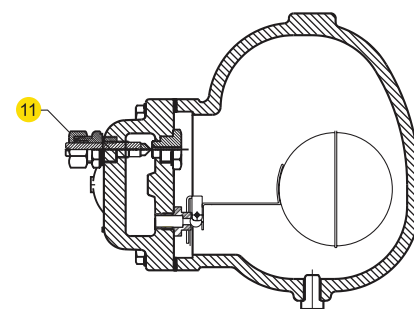
All Dimensions are in mm. weights in kg.

### PT62HP



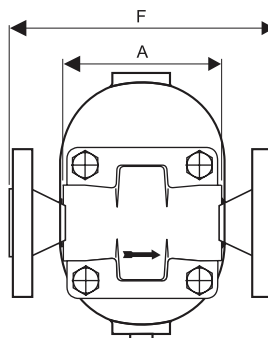
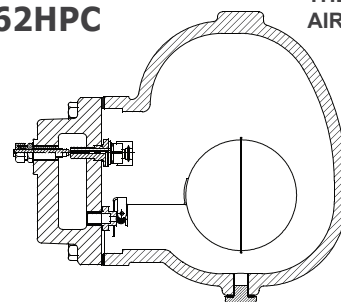
### PT62HPS

STEAM LOCK RELEASE (SLR)

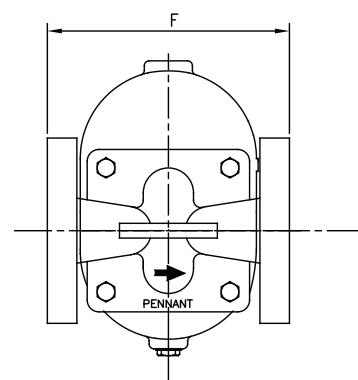


### PT62HPC

THERMOSTATIC AIR VENT + SLR



WELD ON FLANGE



INTEGRAL FLANGE

# PT62HP

## FLOAT & THERMOSTATIC STEAM TRAPS - DN40, 50



### DESCRIPTION:

PT62HP float and thermostatic (internal air vent) steam traps are designed for draining condensate from all types of low and medium pressure steam heating and process equipment.

Typical applications include unit heaters, heat exchangers, driers and jacketed vessels.

### AVAILABLE TYPES:

- PT 62 - with thermostatic air vent
- PT 62 HP S - SLR (with steam lock release)
- PT 62 HP C - with thermostatic air vent and SLR

### FEATURES:

- Modulating discharge.
- Discharges condensate at steam temperature.
- Excellent air venting (by thermostatic air vent).

**USE:** Saturated and superheated steam

### SIZES:

DN40, 50

**CONNECTIONS:** Screwed (NPT/BSPT/BSP)  
Flanged/Socket Weld

\* End connection flanges of ASTM A105 forged carbon steel are welded on.

**Non IBR/IBR approved**

### TRAP DISCHARGE CAPACITY IN kg/hr

MODEL	SIZE	DIFFERENTIAL PRESSURE (kg/cm <sup>2</sup> )													
		0.5	1	2	3	4.5	7	9	10	12.5	14	17.5	21	25	32
PT62 HP-21	DN40, 50	1820	2100	2630	2814	3015	3160	4020	4240	4820	5060	6130	6640	---	---
PT62 HP-25	DN40, 50	1540	1780	2230	2380	2550	2675	3400	3590	4080	4280	5185	5620	5800	---
PT62 HP-32	DN40, 50	1180	1360	1705	1820	1950	2050	2600	2750	3120	3275	3970	4300	4440	4680

Recommended safety factor: steady condition 1.5 - 2; fluctuating condition 2-3

### LIMITING CONDITIONS:

PMA: Max. allowable pressure	16 < P ≤ 32 kg/cm <sup>2</sup> (g)
TMA: Max. allowable temperature	425° C
PMO: Max. operating pressure	32 kg/cm <sup>2</sup> (g)
TMO: Max. operating temperature	Sat.
Body shell design rating	52@RT
Cold hydro test pressure	48 kg/cm <sup>2</sup> (g)

### INSTALLATION:

Horizontal installation with flow from left to right.

The trap should be installed horizontally below the drain point of the equipment in a position such that the float arm is in a horizontal plane and the float rises and falls vertically, with the flow direction as indicated on the cover.

The arrow on the nameplate should be pointing vertically upwards.

Max. differential pressure range:

PT62 HP-21 : 21 kg/cm<sup>2</sup>

PT62 HP-25 : 25 kg/cm<sup>2</sup>

PT62 HP-32 : 32 kg/cm<sup>2</sup>

## MATERIAL:

NO.	PART	MATERIAL	QTY. (Nos.)
1.	BODY	ASTM A216 Gr. WCB	01
2.	COVER	ASTM A216 Gr. WCB	01
3.	GASKET	GRAPHITE WITH SS REINFORCEMENT	01
4.	VALVE SEAT	AISI 420/ASTM A743 Gr.CA40	01
5.	BALL FLOAT & LEVER ASSY.	AISI 304	01
6.	AIR VENT	BIMETAL/SS	01
7.	BOLT	ASTM A193 Gr. B7	06
8.	DRAIN PLUG	CARBON STEEL	01
9.	BRACKET ASSY.	AISI 304	01
10.	SLR UNIT*	AISI 304	01

## DIMENSIONS: Nominal in mm

SIZE	A			
	SCR / SW	INT. FLANGE (#150, #300, PN16 & PN40)	WNRF #150	WNRF #300
DN40	252	230	350	365
DN50	252	230	350	365

## WEIGHTS:

Screwed/SW	FLANGED
31 kg	35 kg

## AVAILABLE SPARES:

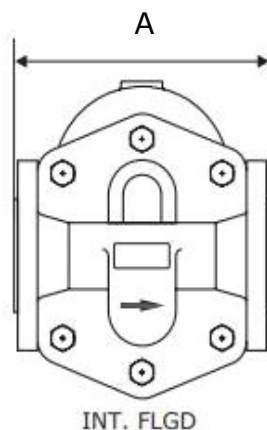
Valve Seat, Ball Float & Lever Assly., Air Vent Assly., Gaskets

## HOW TO ORDER:

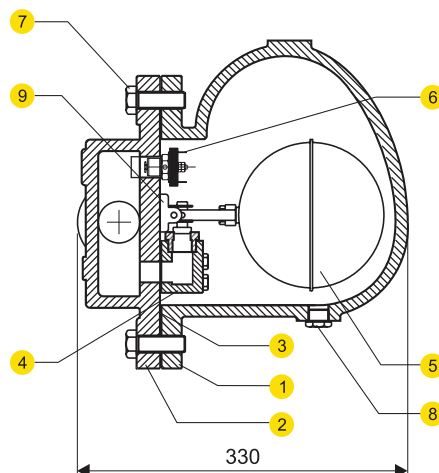
PT62 HP - 21 DN40 BSP NIBR

## ORDERING INFORMATION:

- 1) Inlet Pressure in bar(g)
- 2) Back Pressure in bar(g)
- 3) Operating Temperature in °C
- 4) Condensate Load in kg/hr
- 5) Size & Model
- 6) End Connections
- 7) IBR/NIBR

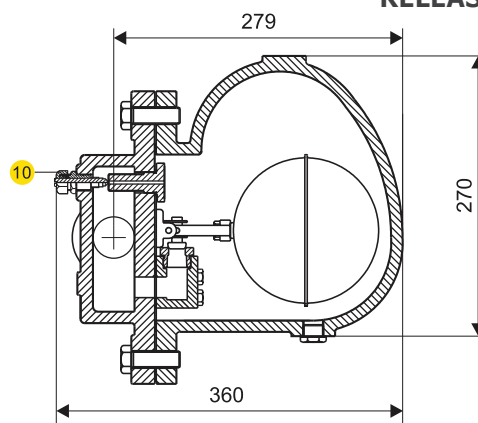


### PT62HP



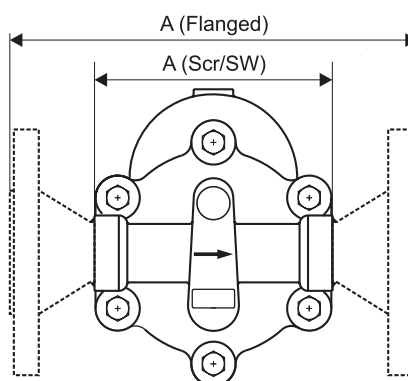
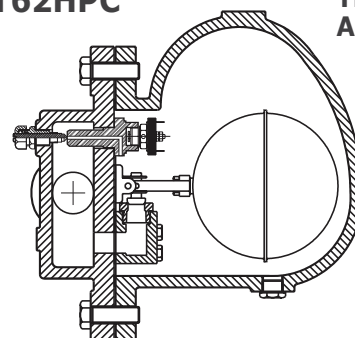
### PT62HPS

### STEAM LOCK RELEASE (SLR)



### PT62HPC

### THERMOSTATIC AIR VENT + SLR



DIMENSIONS - Nominal in mm